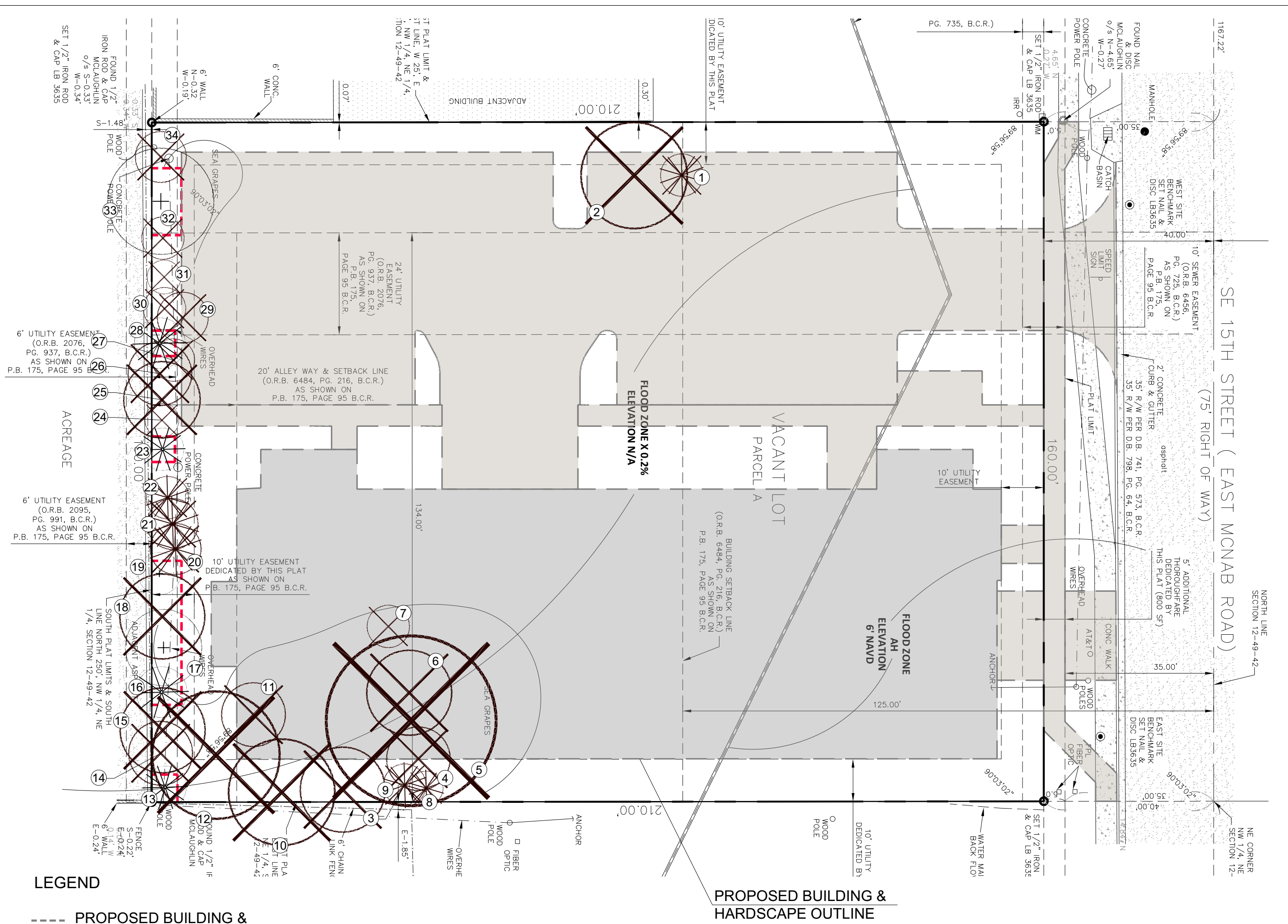




TREE DISPOSITION TABLE										
TREE #	BOTANICAL NAME	COMMON NAME	DBH (in)	HEIGHT (ft)	SPREAD (ft)	CONDITION	STATUS	REPLACEMENT COST	MARK UP	MITIGATION COST
1	Sabal palmetto	Sabal Palm	12	15	10	Fair	REMOVE	\$170	2.5	\$340
2	Schinus terebinthifolia	Brazilian Pepper	6	15	25	Nuisance - Poor	REMOVE	NA		
3	Sabal palmetto	Sabal Palm	10	18	10	Fair	REMOVE	\$170	2.5	\$318.75
4	Coccoloba uvifera	Seagrape	5	15	15	Poor	REMOVE	\$45	2.5	\$73.13
5	Coccoloba uvifera	Seagrape	50	30	40	Moderate	REMOVE	\$600	2.5	\$1,050.00
6	Schinus terebinthifolia	Brazilian Pepper	6	10	20	Nuisance - Poor	REMOVE	NA		
7	Coccoloba uvifera	Seagrape	3	15	10	Moderate	REMOVE	\$15	2.5	\$24.38
8	Sabal palmetto	Sabal Palm	13	24	8	Fair	REMOVE	\$170	2.5	\$318.75
9	Schinus terebinthifolia	Brazilian Pepper	6	18	20	Nuisance - Poor	REMOVE	NA		
10	Schinus terebinthifolia	Brazilian Pepper	16	30	25	Nuisance - Poor	REMOVE	NA		
11	Ficus benjamina	Weeping Fig	6	18	15	Moderate	REMOVE	\$20	2.5	\$35.00
12	Coccoloba uvifera	Seagrape	27	30	30	Fair	REMOVE	\$600 (20/ft)	2.5	\$1,050.00
13	Sabal palmetto	Sabal Palm	12	30	10	Fair	REMAIN	\$170	2.5	\$318.75
14	Schefflera actinophylla	Umbrella Tree	3	18	15	Nuisance - Poor	REMOVE	NA		
15	Schinus terebinthifolia	Brazilian Pepper	4	18	20	Nuisance - Poor	REMOVE	NA		
16	Sabal palmetto	Sabal Palm	10	20	12	Moderate	REMAIN	\$150	2.5	\$262.50
17	Coccoloba uvifera	Seagrape	22	20	18	Moderate	REMAIN	\$400 (20/ft)	2.5	\$700.00
18	Schinus terebinthifolia	Brazilian Pepper	8	18	20	Nuisance - Poor	REMOVE	NA		
19	Coccoloba uvifera	Seagrape	11	10	10	Moderate	REMAIN	\$25	2.5	\$43.75
20	Sabal palmetto	Sabal Palm	no CT	18	12	Moderate	REMOVE	\$125	2.5	\$219.00
21	Sabal palmetto	Sabal Palm	12	30	12	Fair	REMOVE	\$170	2.5	\$340.00
22	Sabal palmetto	Sabal Palm	10	25	10	Fair	REMOVE	\$170	2.5	\$319.00
23	Sabal palmetto	Sabal Palm	10	25	10	Fair	REMAIN	\$170	2.5	\$319.00
24	Cupaniopsis anacardioides	Carrotwood	3	12	8	Nuisance - Poor	REMOVE	NA		
25	Cupaniopsis anacardioides	Carrotwood	7	20	18	Nuisance - Poor	REMOVE	NA		
26	Cupaniopsis anacardioides	Carrotwood	3	20	15	Nuisance - Poor	REMOVE	NA		
27	Cupaniopsis anacardioides	Carrotwood	3	15	10	Nuisance - Poor	REMOVE	NA		
28	Sabal palmetto	Sabal Palm	10	25	12	Fair	REMAIN	\$170	2.5	\$319.00
29	Cupaniopsis anacardioides	Carrotwood	5	12	12	Nuisance - Poor	REMOVE	NA		
30	Cupaniopsis anacardioides	Carrotwood	5	12	10	Nuisance - Poor	REMOVE	NA		
31	Cupaniopsis anacardioides	Carrotwood	3	12	8	Nuisance - Poor	REMOVE	NA		
32	Coccoloba uvifera	Seagrape	3	10	10	Poor	REMOVE	\$15	2.5	\$24.00
33	Coccoloba uvifera	Seagrape	9	15	25	Moderate	REMAIN	\$45	2.5	\$79.00
34	Cupaniopsis anacardioides	Carrotwood	5	15	12	Nuisance - Poor	REMOVE	NA		

TREES & PALM TO BE REMOVED & MITIGATED (Nuisance Trees not included)										
TREE #	BOTANICAL NAME	COMMON NAME	DBH (in)	HEIGHT (ft)	SPREAD (ft)	CONDITION	STATUS	REPLACEMENT COST	MARK UP	MITIGATION COST
1	Sabal palmetto	Sabal Palm	12	15	10	Fair	REMOVE	\$170	2.5	\$340
3	Sabal palmetto	Sabal Palm	10	18	10	Fair	REMOVE	\$170	2.5	\$318.75
4	Coccoloba uvifera	Seagrape	5	15	15	Poor	REMOVE	\$45	2.5	\$73.13
5	Coccoloba uvifera	Seagrape	50	30	40	Moderate	REMOVE	\$600	2.5	\$1,050.00
7	Coccoloba uvifera	Seagrape	3	15	10	Moderate	REMOVE	\$15	2.5	\$24.38
8	Sabal palmetto	Sabal Palm	13	24	8	Fair	REMOVE	\$170	2.5	\$318.75
11	Ficus benjamina	Weeping Fig	6	18	15	Moderate	REMOVE	\$20	2.5	\$35.00
12	Coccoloba uvifera	Seagrape	27	30	30	Fair	REMOVE	\$600 (20/ft)	2.5	\$1,050.00
20	Sabal palmetto	Sabal Palm	no CT	18	12	Moderate	REMOVE	\$125	2.5	\$219.00
21	Sabal palmetto	Sabal Palm	12	30	12	Fair	REMOVE	\$170	2.5	\$340.00
22	Sabal palmetto	Sabal Palm	10	25	10	Fair	REMOVE	\$170	2.5	\$319.00
32	Coccoloba uvifera	Seagrape	3	10	10	Poor	REMOVE	\$15	2.5	\$24.00



LEGEND

----- PROPOSED BUILDING & HARDSCAPE FOOTPRINT

--- TREE PROTECTION FENCE

⊗ TREE NUMBER

⊕ EXISTING TREE TO REMAIN

⊗ EXISTING PALM TO REMAIN

⊗ EXISTING TREE TO BE REMOVED

⊗ EXISTING PALM TO BE REMOVED

NOTES:

1. BOUNDARY SURVEY OF THE PROPERTY. PREPARED BY: ACCURATE LAND SURVEYORS, INC. L.B. #3635 1150 E. ATLANTIC BLVD. POMPANO BEACH, FL 33060 Tel: 954.782.1441

2. THE APPROXIMATE LOCATION, SIZE AND CONDITIONS OF THE EXISTING TREES/PALMS WITHIN THE PROJECT LIMITS HAS BEEN COLLECTED FROM THE ARBORIST REPORT PREPARED BY: ALISON WALKER CERTIFIED ARBORIST ISA FL-9317A info@treage.com C: 786.525.7883

3. EXISTING TREES TO REMAIN SHALL BE PROTECTED DURING CONSTRUCTION - SEE EXISTING TREE PROTECTION FENCE DETAIL # 1 - SHEET L-01.

4. CONTRACTOR SHALL OBTAIN A TREE REMOVAL PERMIT PRIOR TO THE REMOVAL OF TREES/PALMS PROPOSED TO BE REMOVED.

5. CONTRACTOR TO REMOVE ALL EXISTING SHRUBS AND GROUNDCOVERS UNLESS NOTED IN LANDSCAPE PLAN AS EXISTING TO REMAIN.

1 EXISTING TREE PROTECTION FENCE SECTION

GRAPHIC SCALE

Scale: 1" = 20'-0"

Scale: N.T.S.

1 EXISTING TREE PROTECTION FENCE SECTION

GRAPHIC SCALE

Scale: 1" = 20'-0"

Scale: N.T.S.

SUMMARY TABLE	REPLACEMENT INCHES	REPLACEMENT DOLLARS
Hardwoods Under 18"	17	
Hardwoods 18" and Higher		\$2,100.00
Palms		\$1,855.50

LANDSCAPE ARCHITECTURE
URBAN PLANNING
LAND DESIGN
2300 E. OAKLAND PARK BLVD. SUITE 300
FORT LAUDERDALE, FLORIDA 33309 USA
www.amlandscape.com

Rev	Date	Description
1	5/10/24	ISSUED FOR PERMIT
2		REVISIONS TO ADDRESS CITY COMMENTS FROM 07/20/23
3		
4		
5		
6		

Sheet Title:
**PROPERTY SURVEY
& TREE DISPOSITION
PLAN**

Project Name:
CONDO HOTEL
872 E. McNab Road
Pompano Beach, FL 33060

Digitally signed by
Andres E Montero
Date: 2024.05.13
15:17:54 -0400

Date: OCTOBER 5, 2023
Scale: 1" = 20'-0"
Drawn By: AEM/MP
Project No: 202323

Sheet Number:
L-01

Sunshine State
One Call
Know what's below.
Call before you dig.

PZ23-12000045
07/03/2024